



OUTDOOR ELEMENTS II

132

CM BLADESPAN

OUTDOOR



PULL CHAIN

LIMITED
LIFETIME
MOTOR
WARRANTY



WET RATED

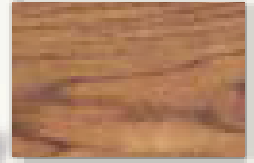
MOTOR SIZE: 172 mm x 20 mm

2 MOUNTING OPTIONS:

Standard • Angled Ceiling



24324
Weathered Brick finish
with 5 Solid Teak blades



Solid Teak



24326
White finish with 5
White (plastic) blades



White

ENERGY INFORMATION		
Airflow	6,203	<i>CFM at high speed</i>
Electricity Use	53	<i>Watts at high speed</i>
Airflow Efficiency	118	<i>CFM/Watts at high speed</i>

DIMENSIONS AND MEASUREMENT (in centimeters)			
	STANDARD	ANGLED	FLUSH
A	35.66	119.48	-
B	31.45	115.27	-
C	9.42	9.42	-
D	29.21	29.21	-
E	16.28	16.28	-

FEATURES
• IP44 rating
• Aluminium housing with stainless steel hardware
• Light kit adaptable



OUTDOOR ELEMENTS II

137
CM BLADESPAN

OUTDOOR


PULL CHAIN

LIMITED
LIFETIME
MOTOR
WARRANTY


WET RATED

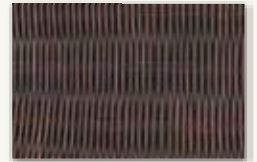
MOTOR SIZE: 172 mm x 20 mm
2 MOUNTING OPTIONS:
Standard • Angled Ceiling



24323
New Bronze finish with 5 plastic Antique Dark Palm Leaf/Antique Dark Wicker reversible blades



Antique Dark Palm Leaf



Antique Dark Wicker



24325
Raw Aluminum finish with 5 plastic Natural Palm Leaf/Natural Wicker reversible blades



Natural Palm Leaf



Natural Wicker

ENERGY INFORMATION	
Airflow	5,370 <i>CFM at high speed</i>
Electricity Use	53 <i>Watts at high speed</i>
Airflow Efficiency	102 <i>CFM/Watts at high speed</i>

DIMENSIONS AND MEASUREMENT (in centimeters)			
	STANDARD	ANGLED	FLUSH
A	35.66	119.48	-
B	31.45	115.27	-
C	9.42	9.42	-
D	29.21	29.21	-
E	16.28	16.28	-

- | FEATURES |
|---|
| <ul style="list-style-type: none"> • IP44 rating • Aluminium housing with stainless steel hardware • Light kit adaptable |